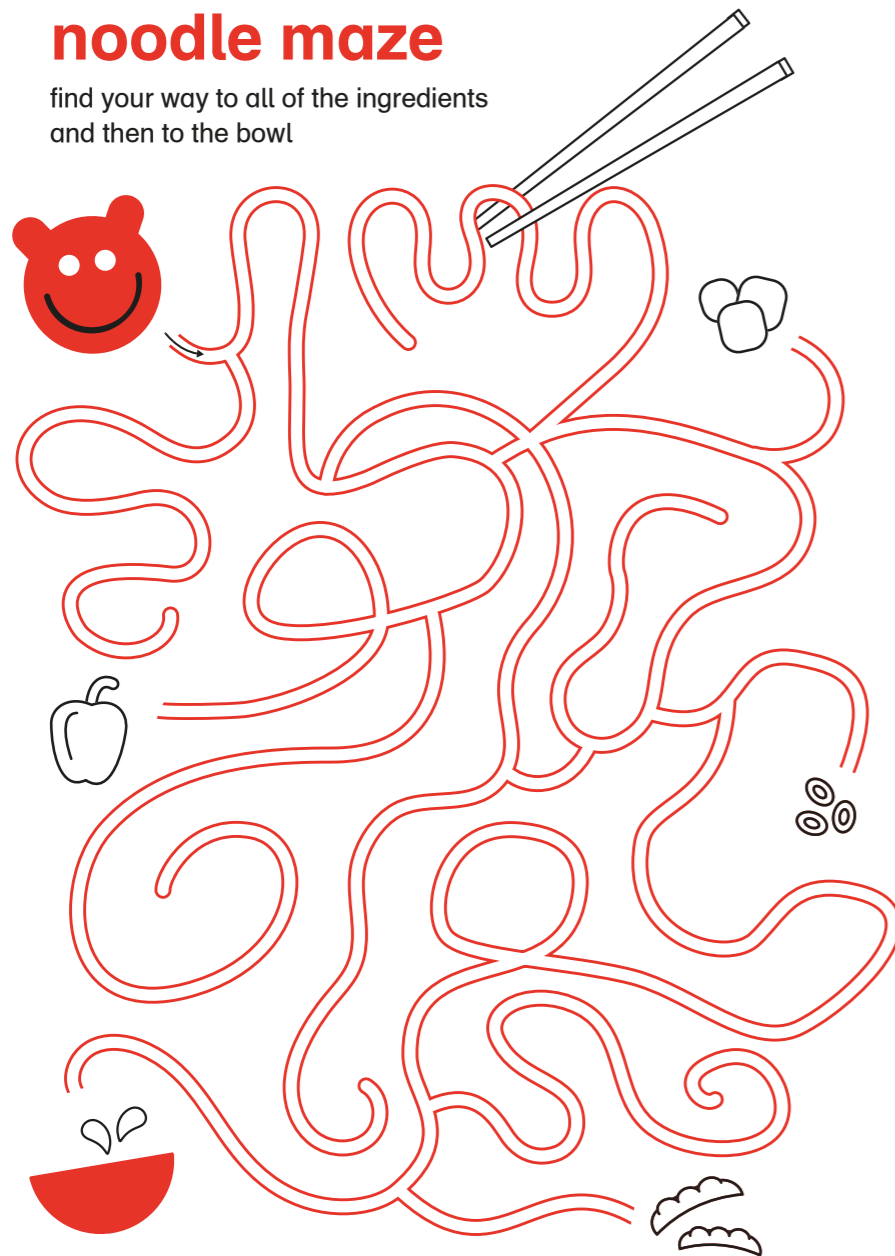


# wagamama



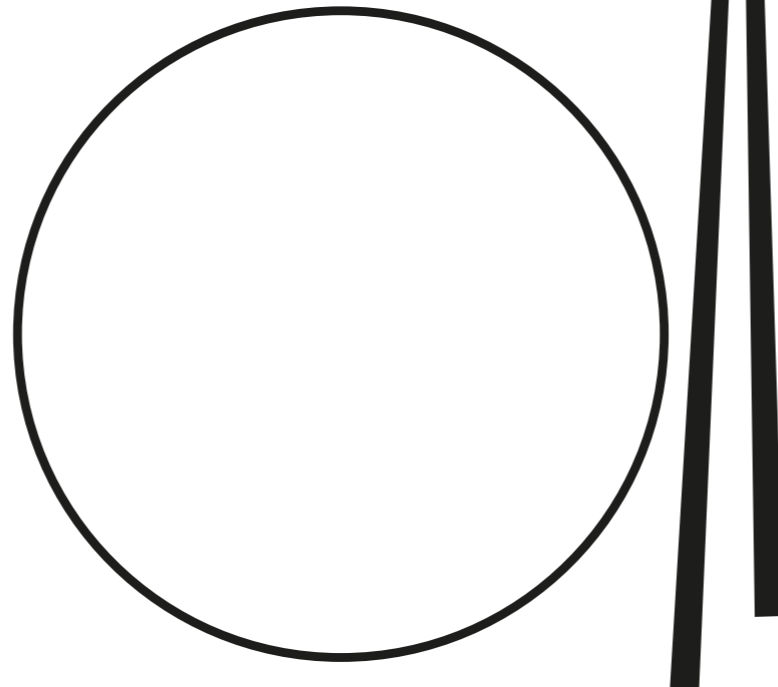
## noodle maze

find your way to all of the ingredients and then to the bowl



## creative chef

get creative! design a beautiful plate of food



## foodie finder

try to find the foodie words before it's time to eat



w	r	a	m	e	n	r	c
d	h	s	i	u	o	j	q
f	p	t	v	t	o	f	u
k	a	o	m	k	d	b	n
a	n	s	z	c	l	p	x
t	k	g	a	w	e	w	s
s	o	t	y	a	s	a	i
u	i	r	l	g	c	d	h

- \* noodles
- \* ramen
- \* katsu
- \* panko
- \* yasai
- \* tofu

## kids menu

### ramen

- 920 **mini ramen** 75  
nudler i kyllingesuppe toppet med grillstegt kyllingebryst, sæsongrønt, gulerod og majskeer
- 927 **mini veggie ramen (v)** 65  
nudler i grøntsagssuppe toppet med stegt tofu, sæsongrønt, gulerod og majskeer

### nudler

- mini yaki soba**  
teppanstegte nudler med æg, majskeer, sukkerærter, peberfrugt og amai sauce
- 940 **kylling** 65
- 941 **tofu (v)** 65
- 981 **mini chicken noodles** 75  
soba-nudler med grillstegt kyllingebryst, gulerod, majskeer, agurk og amai sauce
- 982 **mini salmon noodles** 80  
soba-nudler med grillstegt laks, gulerod, majskeer, agurk og amai sauce

### ris

- mini chicken katsu**  
dybstegt, panko-paneret kyllingebryst serveret med japanske ris, agurk og majskeer, gulerod og katsu-curry sauce eller amai sauce
- 971 **katsu** 68
- 973 **grillet** 68

### noget sødt

- 913 **vaniljeis (v)** 28  
en kugle gammeldags vaniljeis med enten chokolade, eller mangosauce
- 914 **chokolade is** 28  
en kugle med chokolade is og chokoladesauce

### drikke

- 719 **æblejuice** 38
- 750 **glas mælk** 25
- 720 **hyldeblomst** saft af hyldeblomst 38

(v) egnet til vegetarer    kan indeholde små ben    (vg) vegansk

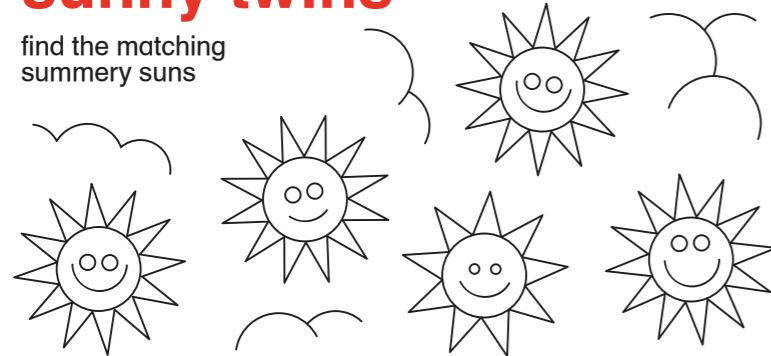


# wagamama



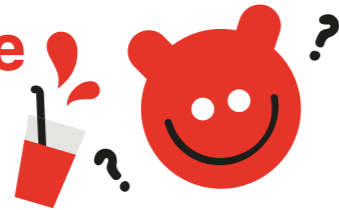
## sunny twins

find the matching summery suns



## juicy scramble

unscramble the letters to find fun fruity words



namog \_\_\_\_\_

iwki \_\_\_\_\_

nabana \_\_\_\_\_

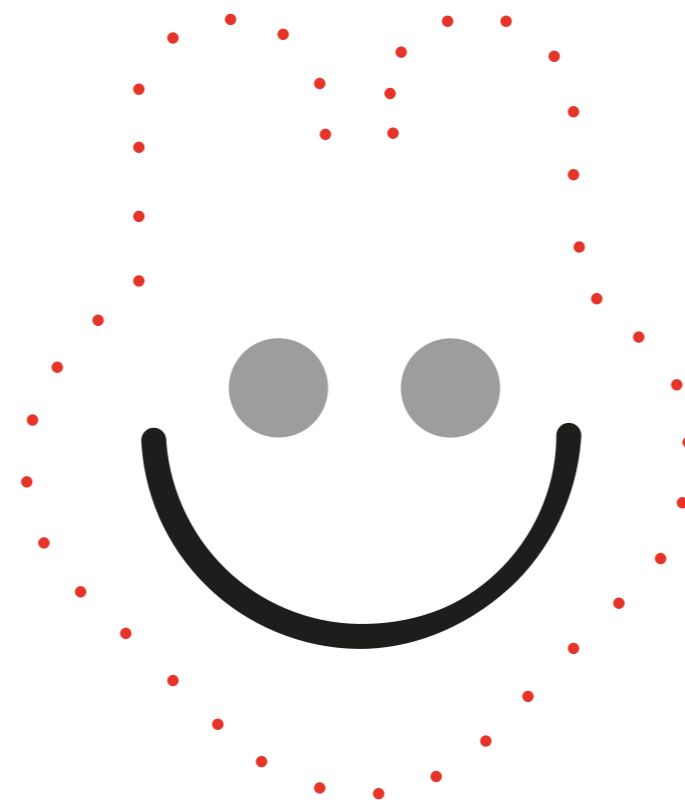
## party patterns

draw the next 3 items in the sequence



## dot to dot

who is hiding behind these dots?



## kids menu

### ramen

- 920 **mini ramen** 75  
noodles in a chicken soup topped with grilled chicken breast, seasonal greens, carrot and sweetcorn
- 927 **mini veggie ramen (v)** 65  
noodles in a vegetable soup topped with fried tofu, seasonal greens, carrot and sweetcorn

### noodles

- mini yaki soba**  
teppan-fried soba noodles with egg, sweetcorn, mangetout, peppers and amai sauce
- 940 **chicken** 65
- 941 **tofu (v)** 65
- 981 **mini chicken noodles** 75  
soba noodles with grilled chicken with carrot, sweetcorn, cucumber and amai sauce
- 982 **mini salmon noodles** 80  
soba noodles with grilled salmon with carrot, sweetcorn, cucumber and amai sauce

### rice dishes

- mini chicken katsu**  
chicken breast deep-fried in panko breadcrumbs or grilled, served with sticky white rice, carrot, cucumber and sweetcorn. served with your choice of either katsu curry or amai sauce
- 971 **katsu** 68
- 973 **grilled** 68

### something sweet

- 913 **vanilla pod ice cream (v)** 28  
a scoop of dairy vanilla pod ice cream with either chocolate or mango fruit sauce
- 914 **chocolate ice cream** 28  
a scoop of chocolate ice cream with chocolate sauce

### drinks

- 719 **apple juice** 38
- 720 **elderflower cordial** 38  
natural elderflower cordial
- 750 **glass of milk** 25

(v) dishes suitable for vegetarians    this dish may contain some small bones    (vg) vegan

